

# Heater Application Design Inquiry

*Not certain what you need in a heater or how your current application may be improved? Simply complete as many questions as you can below and submit this form to us. We will promptly contact you and develop a solution to meet your requirements.*

Date \_\_\_\_\_

Name \_\_\_\_\_

Company \_\_\_\_\_

Phone \_\_\_\_\_

Email \_\_\_\_\_

Briefly describe your application and the environment it will be in (e.g., outdoors, under water, etc.).

---

---

---

---

What will you be heating?

---

---

---

---

What temperature do you wish to maintain? \_\_\_\_\_

At what voltage and watts will the heater be operated? \_\_\_\_\_

Please provide any additional data about the application and/or include an image of the application with submission of this form.

---

---

---

---

---

---

---

---

*Note: The second page is for your convenience, but you may contact us without referencing it.*



[www.surecontrols.com](http://www.surecontrols.com)

N981 Tower View Drive • Greenville, WI 54942 • (800) 844-8405 • (920) 560-3314 Fax • [salesinfo@surecontrols.com](mailto:salesinfo@surecontrols.com)

# Cast-In Heater Application Design Inquiry

## Cast-In Heater—Water Cooled

Date \_\_\_\_\_  
 Name \_\_\_\_\_  
 Company \_\_\_\_\_  
 Phone \_\_\_\_\_  
 Email \_\_\_\_\_

### Variable Dimensions

Inside Diameter "A" \_\_\_\_\_ Length "B" \_\_\_\_\_  
 Thickness "C" \_\_\_\_\_ "D" \_\_\_\_\_

### Material Specifications

- Aluminum       Bronze       Brass

### Electrical Specifications

Watts each half \_\_\_\_\_ Volts each half \_\_\_\_\_ Phase \_\_\_\_\_

### Clamping Style

- Straps       Bolts Clamp

### Cooling Tube Sizes

- 1/4" O.D. SS       3/8" O.D. SS       1/2" O.D. SS  
 Optional Incoloy (1/2" only)       Dual Cooling Tubes

### Cooling Tube Fittings

- Non-exposed 3/8" NPTF       "HS" Hi-Seal Fitting       "RA" 90° Copper Elbow  
 Non-exposed 1/2" NPTF       "BF" High Pressure       "RT" 90° Threaded Elbow  
 "FF" Flared Seal       "R3" Straight Threaded

### Terminal Style

- "S" Post Terminals       "L9" Terminal Lug       "C4" Ceramic Cover       "F" Plain Leads  
 "R" 90° Blockhead       "T7" Post Terminals       "H" Hermetic Seal       "L" Terminal Lug  
 "E" Right-Angle Lugs       "T" Post Terminals       "SF"-SF9" Quick Disconnect       "TS" Leads and Shrink Sleeve  
 "R1" Armor Cable Leads       "R2" Blockhead and Through Hole

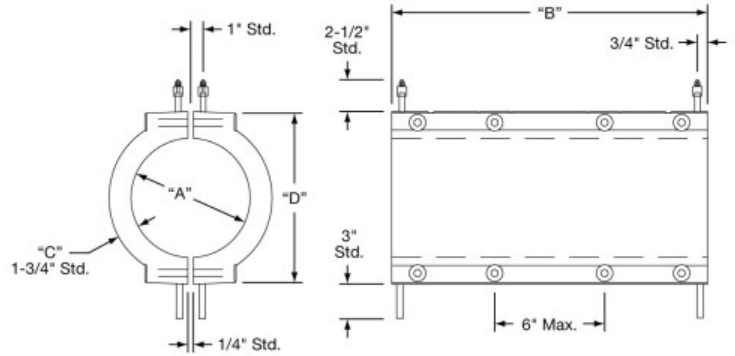
### Terminal Protection Box

- "C2" Standard       "C7" 1 Box for both halves       "EP" Explosion Resistant  
 "P2" High Temperature Quick-Disconnect       "MPR" Moisture Resistant Box       "MR1" Rigid Moisture Resistant Box

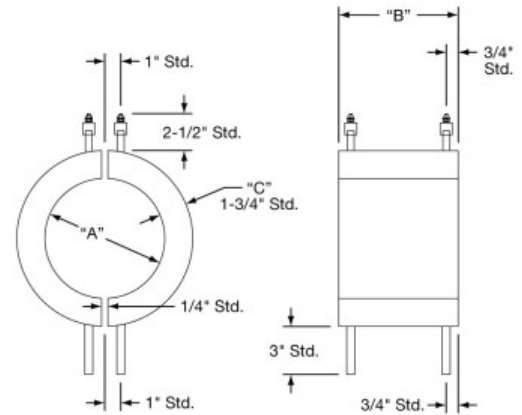
**Finish** Machines or As Cast. *Indicate surfaces to be machined.*

**Special Cast-In Features** Holes, Cutouts, Slots, Bevels, Mounting Studs, Stand-Offs and Taper Angles.  
*For special features, a detailed drawing is required.*

## Cast-In Band Heater Bolt Clamping



## Cast-In Band Heater Strap Clamping



[www.surecontrols.com](http://www.surecontrols.com)